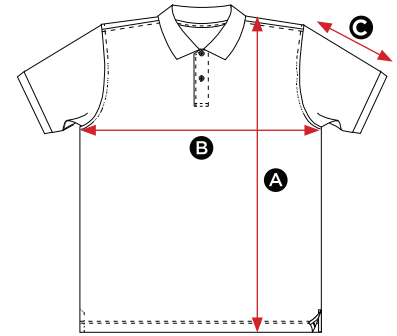


Unisex Polo

| | MEASUREMENTS CM | XS | S | M | L | XL | 2XL | 3XL | 4XL | 5XL |
|----------|---|-------|------|-------|-------|-------|-------|-------|-------|-------|
| A | LENGTH FROM SHOULDER POINT TO HEM | 69,75 | 72,5 | 73,5 | 75 | 76,25 | 77,5 | 78,75 | 80 | 81,25 |
| B | CHEST 2.5 cm BELOW ARMHOLE (half chest) | 43,25 | 47 | 50,75 | 54,75 | 58,5 | 62,25 | 66 | 69,75 | 73,75 |
| C | UNDERARM TO END OF CUFF | 11 | 11 | 12 | 13,25 | 14,25 | 15,75 | 17 | 18 | 19 |



All measurements are within industry standard tolerances and are product dependent.

| | | |
|-------------------|-----------|----|
| Country of Origin | Pakistan | |
| Commodity Code | 61051000 | |
| CTN quantity | XS - M | 70 |
| | L - 2XL | 60 |
| | 3XL - 4XL | 50 |
| | 5XL | 40 |
| Wash at | 60° | |
| Öko-Tex | 11-58503 | |
| SEDEX | 1044329 | |
| WRAP | 8739 | |



Style Info

SGE501 Unisex Polo

XS - 5XL

- 180 g/m²
- 50% Cotton, 50% Polyester
- Heather Grey: 95% Cotton, 5% Polyester
- Ribbed collar
- Inside necktape
- 3 tone on tone buttons
- Double needle stitching
- Bottom hem and cuffs in self fabric
- Side seams
- Tagless style, off-centered size label in the neck
- 60°C washable

